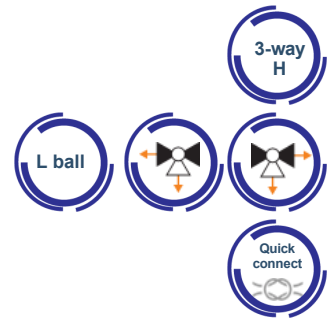


ZVQ 3000HL

3-way zone ball valves



- Internal or external thread
- DN20 ÷ DN25
- L-port ball
- Horizontal design
- Quick mounting on the actuator
- Low operating torque
- For diverting or changeover applications
- Motorized with AQ5 series actuators
- For domestic and commercial heating and cooling hydronic closed systems



ZVQ 3000HL are 3-way brass ball valves for use in heating and cooling systems. Valves are available in DN20+DN25, with internal ZVQ 3100 or external ZVQ 3200 thread. Valves are suitable for long-term operation due to the special sealing construction. The low operating torque of the valve prevents the valve from blocking. Valves are motorized with actuators series AQ5 making a compact zone unit with high regulating accuracy and easy installation with a quick system that allows to assembly and disassembly of the actuator in a simple, rapid and secure way.

Type overview

Code	Type	DN	Connection	Kvs	PN	Pipe connections	Valve design	Ball port
10201	ZVQ3120HL	20	Rp 3/4"	9	25	Internal thread	Horizontal	L
10202	ZVQ3125HL	25	Rp 1"	14	25	Internal thread	Horizontal	L
10205	ZVQ3220HL	20	G 1"	9	25	External thread	Horizontal	L
10206	ZVQ3225HL	25	G 1 1/4"	14	25	External thread	Horizontal	L



Technical data

Pipe connections	Rp internal thread (EN 10226-1) G external thread (ISO 228-1)
Nominal pressure	PN25
Max. diff. pressure	6 bar (max 2 bar for low noise operation)
Fluid temperature	-15 °C to +110 °C ; (with actuator 2...90°C)
Fluid	Water, water with glycol up to 50 % vol. The water quality requirements specified in VDI 2035 must be adhered to
Max. leakage	Rate B according to: EN 12266-1:2003
Angle of rotation	90 °
Installation position	Upright to horizontal (related to stem)
Servicing	Maintenance-free. The installation of a strainer is recommended.
Material	
Valve body	Brass, CW617N
Ball	Chrome-plated brass
Seals	PTFE, EPDM Perox

Product range of zone valves

ZVQ 2000
2-way zone valves



ZVQ 3000HL
3-way zone valves L ball



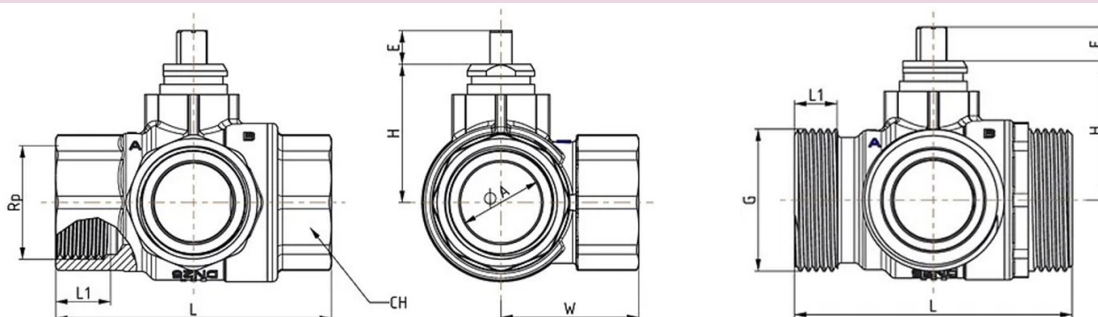
ZVQ 3000HT
3-way zone valves T ball



ZVQ 3000V
3-way zone valves L-L ball



Dimensions



Type	DN	Connection	L (mm)	W (mm)	L1 (mm)	H (mm)	ØA (mm)	E (mm)	CH (mm)	Weight (kg)
ZVQ3120HL	20	Rp 3/4"	72	36	14	36,5	20	10	31	0,350
ZVQ3125HL	25	Rp 1"	82	41	17	41	25	10	38	0,580
ZVQ3220HL	20	G 1"	72	36	10	36,5	20	10	-	0,385
ZVQ3225HL	25	G 1 1/4"	82	41	13	41	25	10	-	0,650

Type code

ZVQ 3120HL

L=L ball / T=T ball / L-L=L-L ball
 V=vertical valve / H=horizontal valve
 15=DN15 / 20=DN20 / 25=DN25
 1=internal thread / 2=external thread / 3=compression fittings
 2=2-way / 3=3-way
 Q=quick connection for the actuator
 ZV=zone valve

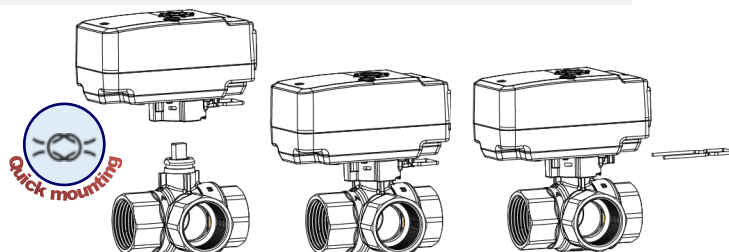
Product features

Quick mounting

The actuator can be mounted on the valve without tool use, by moving the actuator by hand vertically.

Only one position of assembling the actuator to the valve is possible, mistake-proofing assembly.

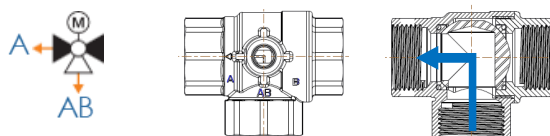
To remove the actuator from the valve, the metal pin must be pulled out.



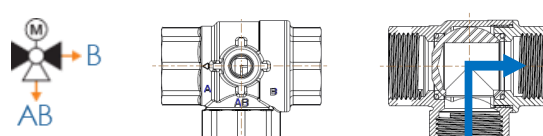
Flow direction

Flow is possible in both directions.

A-AB ports open



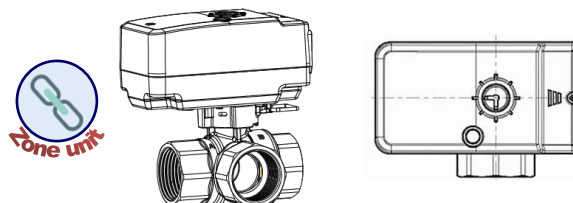
B-AB ports open



Mode of operation

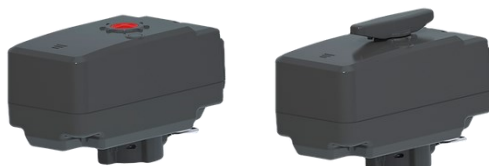
Zone valves ZVQ 3000HL are motorized with actuators series AQ5-2P, controlled by a 2-point (open/close) signal, making a compact unit ZVQ 3000HL-2P.

Valves can also be used with other actuators from AQ5 product range controlled by 3-point or modulating control signals.



Suitable actuators

•AQ5-2P
2-point actuators



•AQ5-3P
3-point actuators

